



Réunion  
des musées  
nationaux  
Grand-Palais

## PRODUCT CATALOG

---

### Jean Fouquet (v. 1420-1481)

Great painter of the first Renaissance, Jean Fouquet is one of the renovators of French painting of the 15th century. Painter, portraitist and illuminator, Jean Fouquet combines in his compositions, the international Gothic with vivid colors and strong contrasts with an acute sense of realism and detail specific to Flemish painting. Fouquet also borrows from Italian painting with the use of perspective.

Jean Fouquet was a recognized artist of his time and innovative in the evolution of the artist's status and recognition still in its infancy at the time.

He was indeed one of the first artists to sign some of his works.

---

<https://pro.boutiquesdemusees.fr/en/selection/jean-fouquet-1420-1481-2907/1/>

March 28, 2024



## Who are we ?

---

The Réunion des musées nationaux - Grand Palais (Rmn-GP) is a French cultural institution under the Culture & Communication Ministry supervision.

As Europe's leading cultural operator, the Rmn-GP has a unique know-how in the artistic and cultural fields: exhibitions' organization, mediation, publishing of cultural derivate products, books, exhibitions catalogus, museum stores management, Art Workshops, photographic Agency...

We manage 35 museum stores in France, including those of the Louvre Museum, the Orsay & l'Orangerie museums, the Château de Versailles, the Picasso-Paris museum, and the Grand Palais des Champs Élysées. We are at the heart of the cultural & museum worlds, working in close collaboration with their Curators and Directors to offer and commercialize renewed ranges of products in line with their exhibitions & cultural actualities.

Our professional Resale team is dedicated to yours with advice for selection & ways of distribution of our cultural products, as it is already with a huge french & international network of museum stores, art galleries, decoration stores, hotels and bookshops, ...

## Our assets

---

We have been working for years with exclusive partnerships bringing together great museums, institutions, foundations and renowned French brands: Ville de Paris, JR, Marie Christine Dorner, Gangzai Design, Valentine Herrenschmidt, Fragonard, Pétrusse, Macon & Lesquoy, Inès de la Fressange, Sam Baron, Antoine Corbineau, Bernardaud, Duvelleroy Paris, Mucha Foundation...

We propose, through our Art Workshops, exclusive reproductions of sculptures collection identical to the original artworks; and engravings made from original copper plates from the Louvre museum's heritage collection of Chalcography.

All our cultural products, designed by our teams in Paris, are directly inspired by the most beautiful masterpieces:

Such as our jewelry, gift and textile collections issued from the iconic paintings of all artistic movements & periods.

We also develop specific ranges for the youngest children that are fun and educational, respecting the EC standards.

And our stationery is entirely printed within the European Union, on high quality paper, in compliance with environmental standards.

Réunion des musées nationaux et du Grand Palais des Champs-Élysées  
254-256, rue de Bercy - 75577 Paris cedex 12 - France  
Phone: +33 (0)1 40 13 48 00  
Etablissement public industriel et commercial - APE 9102Z -  
RCS Paris B692 041 585 / SIRET 69204158500583 - TVA FR11692041585



Summary

Postcards..... 4

    Folded Cards & Envelopes, Boxes..... 4

    Postcards 13.5 x 13.5 cm (5.3 x 5.3 ")..... 4



## POSTCARDS

---

### Folded Cards & Envelopes, Boxes



#### Set of 10 Notecards & Envelopes Musée du Louvre

IP300001

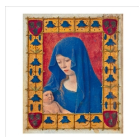
Min.: 5

Pack: 5

**Museum :** Paris - Musée du Louvre - **Artist :** Elisabeth Louise Vigée Le Brun (1755-1842), Leonardo da Vinci (1452-1519), Alessandro Filipepi, dit Sandro Botticelli (1445-1510), Giuseppe Arcimboldo (1527-1593), Jean-Baptiste Camille Corot (1796-1875), Jan Frans van Dael (1764-1840), Johannes Vermeer (1632-1675), Paolo Caliari, dit Veronese (1528-1588), Hans Memling (v. 1435/1440-1494), Jean Fouquet (v. 1420-1481) -

**Material :** Paper - **Dimensions :** 18 cm x 12 cm x 1.5 cm

### Postcards 13.5 x 13.5 cm (5.3 x 5.3 ")



#### Postcard Fouquet, Haincelin, Rolin - Hours of Simon de Varie, circa 1455

IC420476

Min.: 50

Pack: 50

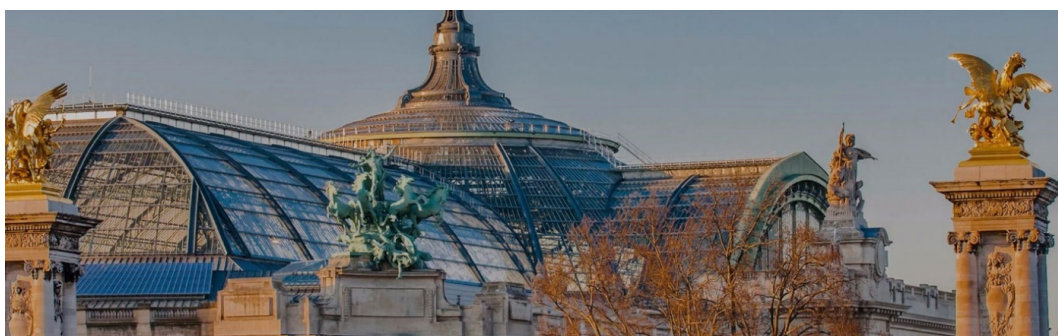
**Museum :** Paris - Musée du Moyen Âge - Thermes et Hôtel de Cluny - **Artist :** Jean Fouquet (v. 1420-1481) -

**Material :** Coated paper - **Dimensions :** 13.5 cm x 13.5 cm



Find out more Rmn-GP collections on our website

<https://pro.boutiquesdemusees.fr/en/>



**LET'S STAY IN TOUCH!**

---

**The Rmn-GP Wholesale Department**

@ [pro.boutiquesdemusees@rmngp.fr](mailto:pro.boutiquesdemusees@rmngp.fr)

254/256 rue de Bercy - 75577 Paris cedex 12 - France